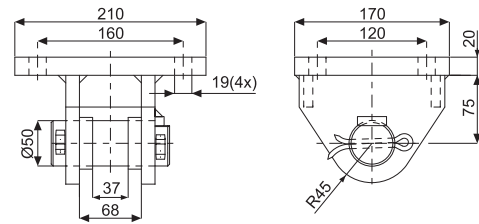


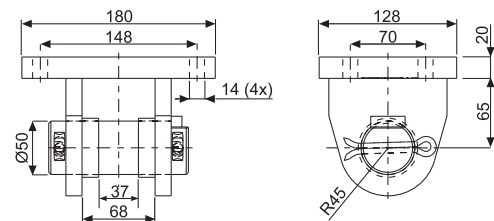
Note: Please verify quoted dimensions with your local Hyva subsidiary or agent prior to use

Top bracket for front end cylinder type FE/FEE/FSE with eye Ø 50 mm (boltable)



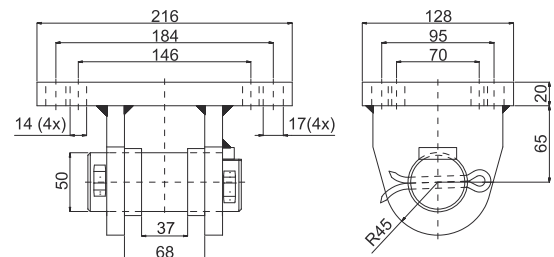
Part number	Mass (Kg)	Max. allowed thrust (kN)	Part no. Replacement axle kit
01506777	11.0	345	01506776

Top bracket for front end cylinder type FE/FEE/FSE with eye Ø 50 mm (boltable)



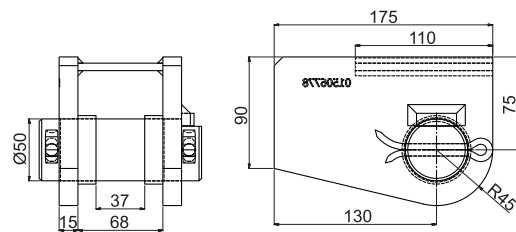
Part number	Mass (Kg)	Max. allowed thrust (kN)	Part no. Replacement axle kit
01506787	7.5	345	01506776

Top bracket for front end cylinder type FE/FEE/FSE with eye Ø 50 mm (boltable)



Part number	Mass (Kg)	Max. allowed thrust (kN)	Part no. Replacement axle kit
01506785	8.3	345	01506776

Top bracket for front end cylinder type FE/FEE/FSE with eye Ø 50 mm (weldable)



Part number	Mass (Kg)	Max. allowed thrust (kN)	Part no. Replacement axle kit
01506778	6.7	345	01506776

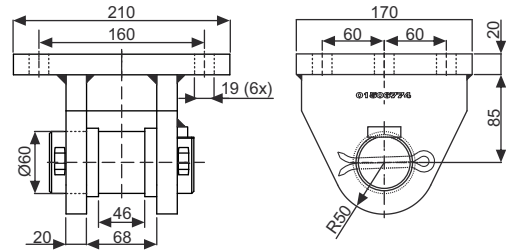
General information

Note:

- The filler rings, pin and split pins are included.
- Brackets are painted black (RAL 9005 / gloss 25%).
- Weight can vary as per production process.
- For mounting, see instructions CYL-0031, CYL-0032, CYL-0033 or CYL-0037

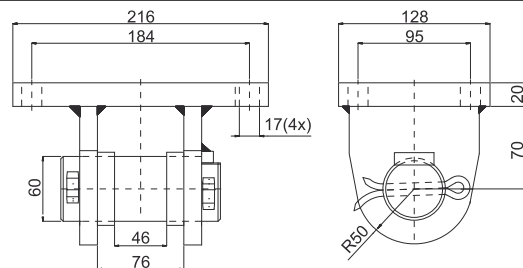
Note: Please verify quoted dimensions with your local Hyva subsidiary or agent prior to use

Top bracket for front end cylinder type FE/FEE/FSE with eye Ø 60 mm (boltable)



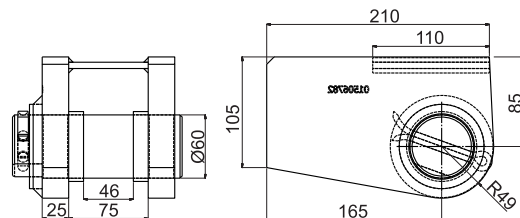
Part number	Mass (Kg)	Max. allowed thrust (kN)	Part no. Replacement axle kit
01506774	13.3	495	01506783

Top bracket for front end cylinder type FE/FEE/FSE with eye Ø 60 mm (boltable)



Part number	Mass (Kg)	Max. allowed thrust (kN)	Part no. Replacement axle kit
01506789	10.6	495	01506784

Top bracket for front end cylinder type FE/FEE/FSE with eye Ø 60 mm (weldable)



Part number	Mass (Kg)	Max. allowed thrust (kN)	Part no. Replacement axle kit
01506782	13.4	495	01506781

General information

Note:

- The filler rings, pin and split pins are included.
- Brackets are painted black (RAL 9005 / gloss 25%).
- Weight can vary as per production process.
- For mounting, see instructions CYL-0031, CYL-0032, CYL-0033 or CYL-0037