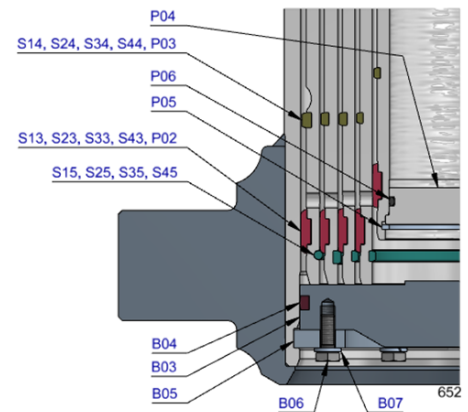
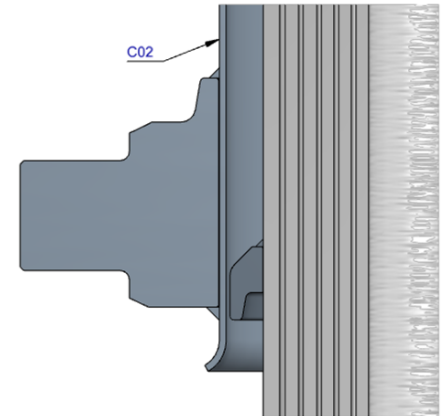
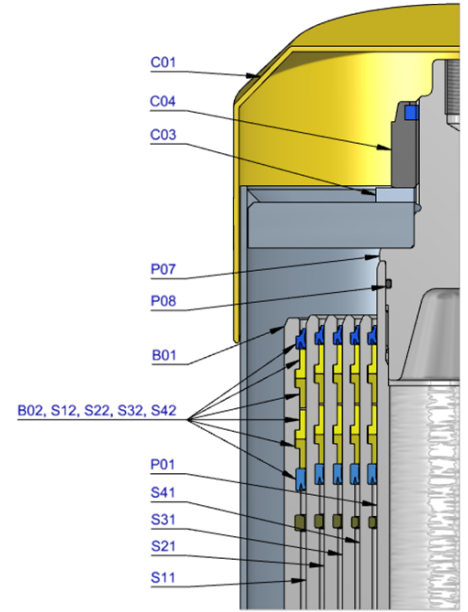


Pos.	Part no.	Description	Qty.
C01	71839040	Dust Cover Fc Low 15-244	1
C02	71706291	Cover 242-0975 PIN60 A340 FIX	1
C03	01702956K	Washer M48 Din 125b Zp	1
C04	01702907K	Topnut Nyloc M48x3 Din985 Zp	1
P01	74462771	Piston FL3 S 091-1885-HC	1
P02	71853091K	Slider FI 091 (2 X 1/2) A22	1
P03	71851091K	Outer Stopping FI 091 A22	1
P04	71822091	Bottom Plate Piston FL 091	1
P05	01745012K	Circlip 82 DIN 472 (87.5x2.5)	1
P06	71870215K	O-ring 69.44 X 3.53 Mm Nbr	1
P07	71848200	Piston Head FL 091 MK2	1
P08	01226430K	O-ring 72.62 X 3.53 Mm Nbr	1
S11	74606770	Stage FL2 169-1880	1
S12	71802169K	Packset FI 169	1
S13	71807171K	Slider FI 169 A35	1
S14	71851169K	Outer Stopping FI 169 A22	1
S15	71813169K	Liftring FI 169x5	1
S21	74605770	Stage FL2 149-1880	1
S22	71802149K	Packset FI 149/hp 150	1
S23	71807151K	Slider FI 149 A35	1
S24	71851149K	Outer Stopping FI 149 A22	1
S25	71852149K	Liftring FI 149 A22	1
S31	74604770	Stage FL2 129-1880	1
S32	71802129K	Packset FI 129/hp 129	1
S33	71853129K	Slider FI 129 (2 X 1/2) A22	1
S34	71851129K	Outer Stopping FI 129 A22	1
S35	71852129K	Liftring FI 129 A22	1
S41	74603770	Stage FL2 110-1880	1
S42	71802110K	Packset FL 110	1
S43	71853110K	Slider FI 110 (2 X 1/2) A22	1
S44	71851110K	Outer Stopping FI 110 A22	1
S45	71852110K	Liftring FI 110 A22	1
B01	74507774R0875	Base FL2 191-1923-4/4BSAE-290-C242 R0875	1
B02	71802191K	Packset FI 191	1
B03	71825430	Bottom Plate FI2 191	1
B04	71870040K	Seal Bottom Plate FI 191	1
B05	71820195	Locking Plate FI2 191	3
B06	01732055K	Bolt Hex M8x20x1.25 Set 6 Pcs	1
B07	01732559K	Washer Spring M8 Set 6 Pcs	1


Seal kit complete

71908650K	Seal Kit complete A169-5	Consists of all packsets with packset grease and O-rings
-----------	--------------------------	--

Notes

The inner stopping and piston bottom are pre-mounted on spare bases, stages and pistons. Therefore, when ordering new tubes, it is not required to order these parts separately.

For repair instructions see: CYL-0040. Serial no. is located on type plate and near type plate support.