

HYVA TIPPING VALVE



TIPPING VALVE - MECHANICAL OPERATING

Hyva

tipping valve type:

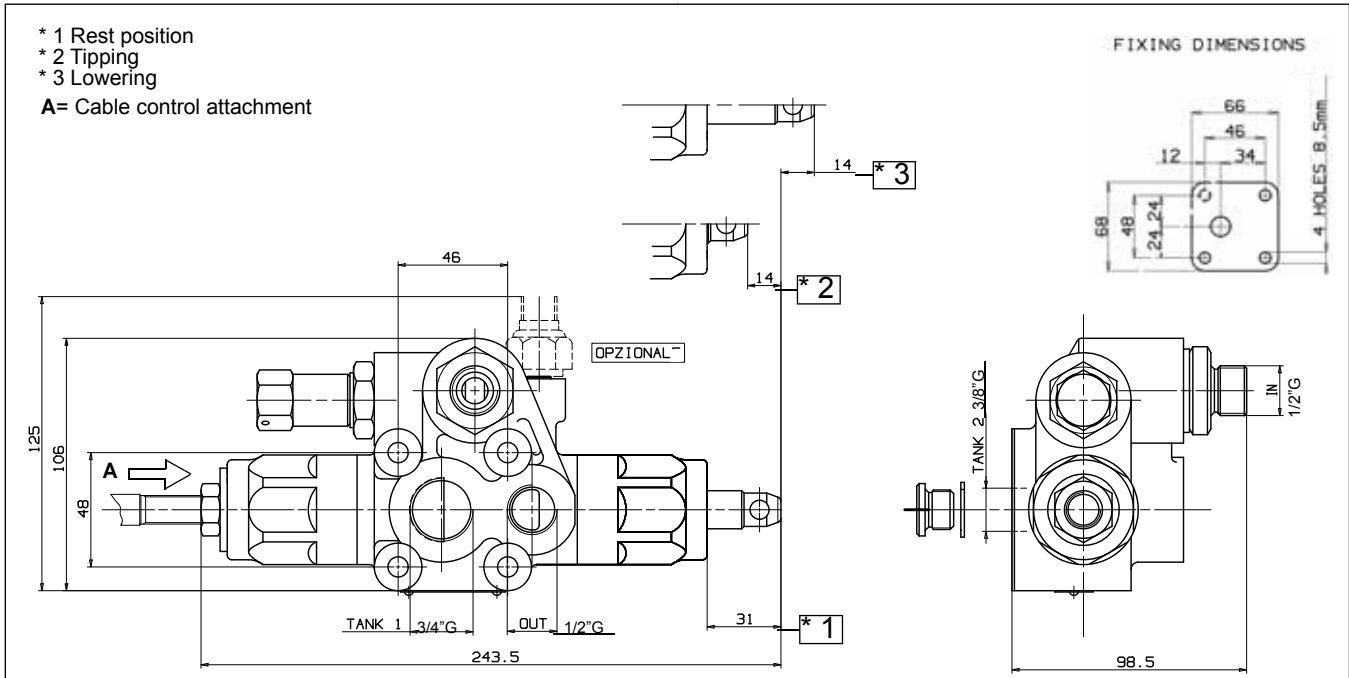
MECHANICAL

working pressure:

140 / 170 / 190 bar

Page 1 / 1

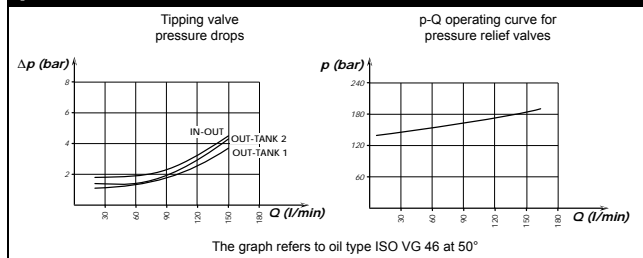
part number valve: 021418160 / ...8161/...8162



specifications

type	Mechanical operated		
	021418160	021418161	021418162
hydraulic connections	SEE DRAWING		
max. working pressure	300 bar		
max. peak pressure	400 bar		
relief valve setting	140 bar	170 bar	190 bar
nominal. flow	80 l/min.		
max. flow	150 l/min. (see p-Q characteristic)		
max pressure on T-conn.	30 bar		
filtration	25 µm		
oil types	mineral oil (DIN 51524 / 51525)		
viscosity range	12-100 cSt (mm ² /s)		
temperature range	-25°C +80°C		
mass	2,5 kg		

p - Q characteristic

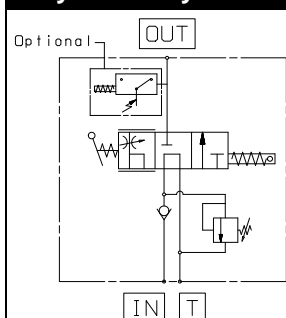


general information

general information

- Mount the valve according to the Hyva mounting instructions.
- Use the correct washer and adapters in the ports to prevent housing deformation.
- Do not use adapters with tapered threads.
- To further prevent deformation of the valve housing, the mounting plate surface or block must be completely flat and plane.
- Do not weld to the valve.
- Max. torque for bolts to mount the valve is 25 Nm.

hydraulic symbol



mounting and notes

Proportional mechanical tipping valve operated by **cable controls series LINEA or LINEA BLOCK** to suit medium-heavy duty tipper trucks. Operated by proportional cab control.

- Built-in check and adjustable safety valves (direct type).
- Nodular cast-iron body for pressure up to 400 bar.
- Either Chassis or tank (DSP kit) mounting options.
- Mechanical Direct End-of-stroke with anti-shock spring.
- Ready for pressure signal switch mounting.
- Galvanized body and nickel spool.
- Compact size thanks to front ports.
- Guaranteed for oil temperature range -25+80 °C, viscosity range 12±100 cSt and oil filtering 25 µm.

Mounting kit
021418186

suitable cable controls

1	021419388	Cable control for valve 4.5mt 3 pos
2	021419385	Cable control valve thread, fixed pos. 3.5m
3	021419387	Cable control 4.5m linea block-red